

---

# PowerManager II

## Uninterruptible Power Supply Software User's Manual

Support:

win10	Windows 10 Home
	Windows 10 Pro
	Windows 10 Enterprise
	Windows 10 Education
win11	Windows 11 Home
	Windows 11 Pro
	Windows 11 Enterprise
	Windows 11 Education
	Windows 11 Pro for Workstations
Win server 2019	Windows Server 2019 Essentials
	Windows Server 2019 Standard
	Windows Server 2019 Datacenter
Win server 2022	Windows Server 2019 Standard
	Windows Server 2019 Datacenter
Win server 2025	Windows Server 2019 Standard
	Windows Server 2019 Datacenter

Copyright . by Richcomm System Technologies Co., Ltd..  
All rights reserved.

---

## **LIMITED WARRANTY**

The program and enclosed materials are all provided “as is” without warranty of any kind, either expressed or implied, including but not limited to the implied warranties of merchantability and fitness for a particular purpose. The entire risk as to quality and performance of the program and enclosed material is assumed by you.

### **LIMITATION OF REMEDIES**

RichComm System Technologies Co., Ltd.’s entire liability and your exclusion remedy

shall be replacement of the media if you have met the conditions as described under

“Limited warranty.” In no event will RichComm system technologies Co., Ltd. be liable to you for any other damages arising out of your use of this program. All mentioned trademarks are the registered trademarks of their respective owners.

### **TECHNICAL SUPPORT**

IpPowerSE network monitoring and control software is developed by Guangzhou RichComm System Technologies Co., Ltd. If you have any questions or suggestions on them, please contact us at any time.

### **RichComm System Technologies Co., Ltd**

Tel: 020-82329896, 82329869, 82321515, 82321516

Fax: 020-82329896 8005

E-mail: [service@richcomm.com.cn](mailto:service@richcomm.com.cn) Website:

<http://www.richcomm.com>

---

Introduction.....	4
Packing including.....	5
Powermanager II operation manual.....	5
System requirements.....	5
PowerManager II for Windows.....	6
Featuresa.....	6
Software Installation.....	7
Start-up and Quit Powermanager II.....	12
Sytem Settings.....	14
A. Base setting.....	14
B. Shutdown settings.....	18
C. Crisis process.....	19
D.History data saving setting.....	22
Broadcast alarm.....	25
Email.....	26
SMS.....	28
Sound.....	29
Windows.....	31
Check History Event.....	33
Check History Data.....	34
Check curve map.....	38
Check State Map.....	39
UPS Control.....	48
PowerManager II for LINUX.....	51
1. Software  installation and operation.....	51
2. software package.....	52
PowerManager II for SCO UNIX.....	53
1. Software  installation and operation.....	53
2. software package.....	54
PowerManager II for FreeBSD.....	55
1. Software  installation and operation.....	55
2. software package.....	56
3. contact us and technical support.....	56

---

# Introduction

PowermanagerII is smart UPS monitoring and control software. It offers local monitoring and network agent monitoring functions through the COM port and USB port. PowermanagerII displays the real time status of the UPS (e.g. input & output voltage, frequency, load, temperature and battery capacity) in numeric and graphic forms, which can help the user monitor the quality of power supply. Simultaneously, the user can remotely monitor the UPS via a network and manage the power system more effectively. In AC failure or UPS battery low cases PowermanagerII will perform its monitoring functions automatically. In addition to auto saving files and performing safe system shutdown , PowermanagerII has some new ways to send warning messages by auto dialing a modem and by sending E-mail. Users can be sure not to lose any information due to power interruptions and can take appropriate actions at once. The system can record UPS performance history data for long term monitoring. In addition, PowermanagerII has a new Windows NT service function, which allows the monitoring program to be executed automatically and does not require a user to be logged in. PowermanagerII is available in many languages, you can select the one that is the most familiar for you to carry out the software configuration and operation.

Today, with the widespread use of the internet, we have come to a time where information is critical. Both PCs and Servers are used to receive and send information round the clock, so automated power management equipment for the UPS has become a necessity PowermanagerII with its full range of functions will be the best partner for your smart UPS.

---

---

## Packing including

Powermanager II Installation CD 1pcs  
DB9F/DB9M cable 1pcs

## Powermanager II operation manual System requirements

Powermanager II hardware and software requirements as follows:

Computer system RS232 communication port

Adopt real RS-232 communication intelligent

win10	Windows 10 Home
	Windows 10 Pro
	Windows 10 Enterprise
	Windows 10 Education
win11	Windows 11 Home
	Windows 11 Pro
	Windows 11 Enterprise
	Windows 11 Education
	Windows 11 Pro for Workstations
Win server 2019	Windows Server 2019 Essentials
	Windows Server 2019 Standard
	Windows Server 2019 Datacenter
Win server 2022	Windows Server 2019 Standard
	Windows Server 2019 Datacenter
Win server 2025	Windows Server 2019 Standard
	Windows Server 2019 Datacenter

## PowerManager II for Windows

### Featuresa

- ◆ Intuitionistic and clarity display pressure 、 frequency 、 load 、 batteries of UPS etc diversified parameter real time fettle communication as data and figure, help users know circs of currently electric power accommodate
- ◆ Supporting Windows NT Service function.

- 
- ◆ Supporting many kinds of languages.
  - ◆ Transmitting the warning message by e-mail automatically.
  - ◆ Calling the warning message automatically.
  - ◆ Monitoring UPS remotely via TCP/IP or Internet.
  - ◆ Detecting the AC fail and the UPS battery low automatically.
  - ◆ Setting the turning on/off time automatically.
  - ◆ Displaying the UPS status in drawing, such as the temperature, voltage, load, line frequency etc.
  - ◆ Broadcasting the warning message.
  - ◆ Pop-up alarm message on the computer with Windows OS through Windows NT Messenger service.
  - ◆ Can select save application files before shutdown system or let computer enter sleep mode directly (need the computer support this function)
  - ◆ Auto send alarm message via GSM SMS.
  - ◆ Auto send alarm message via BP-call.
  - ◆ Auto send alarm voice to via telephone.
  - ◆ Seamless connect to controlplane, realize nobody on duty.
  - ◆ Setting the countdown time and the interval of each warning.
  - ◆ Setting UPS diagnostic and self testing time.
  - ◆ Before removing the system, automatically close and store the applicable programs.
  - ◆ Recording and analyzing the UPS status

---

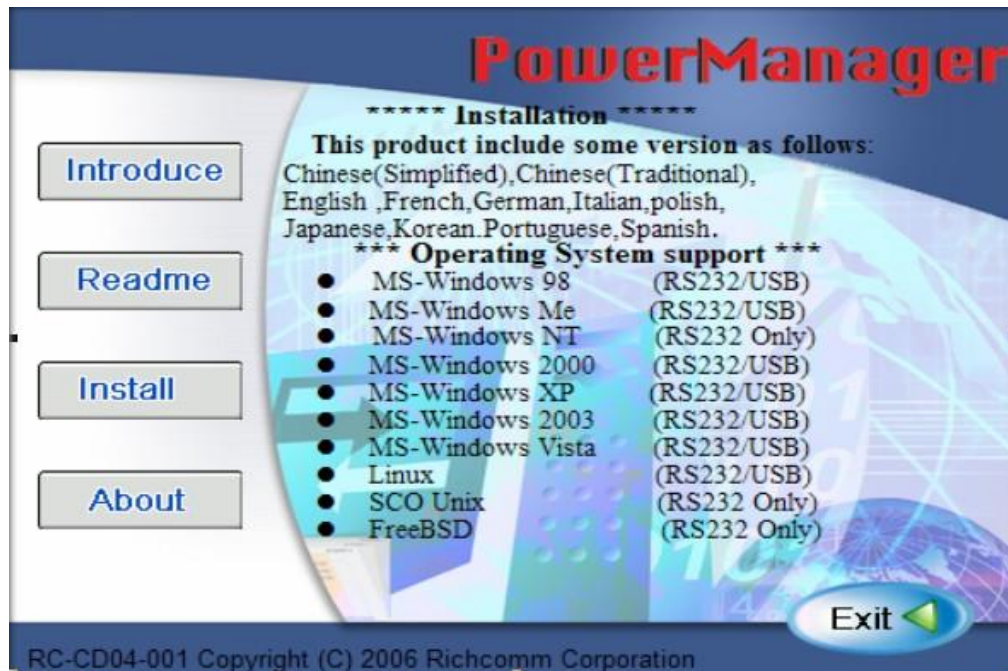
## Software Installation

Following the steps below:

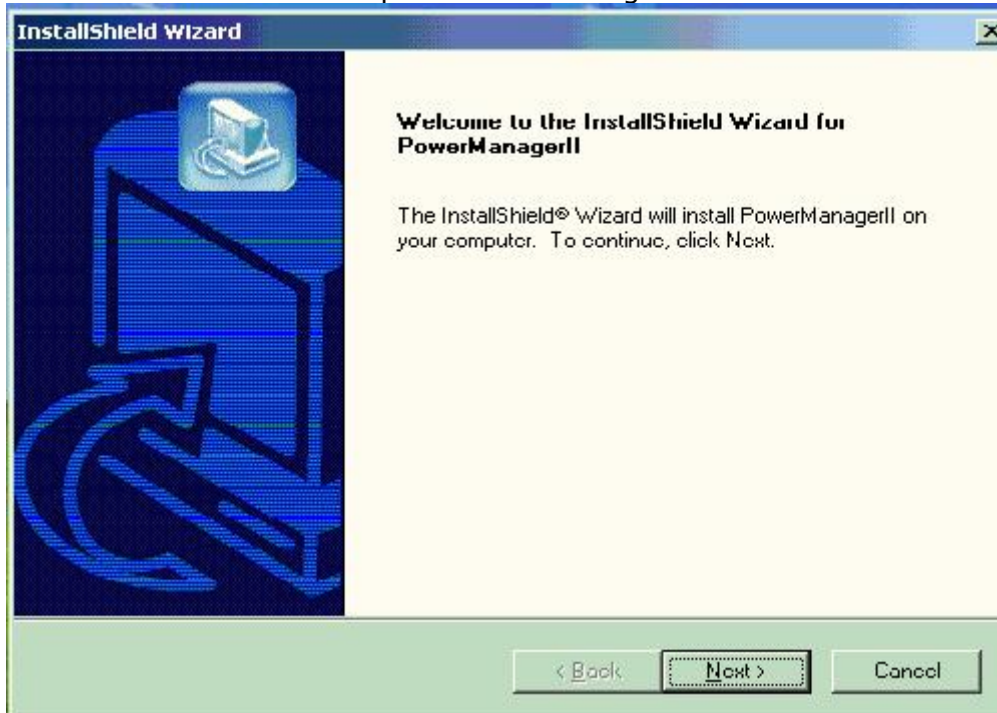
1. Turn on UPS and PC.
2. Place the Powermanager II CD to the CD ROM, will show the install interface:
  - 2.1 >Button 'Introduce' is the default interface is introduce the CD include:



- 2.2 >Button 'Readme' is the CD is support system and Language:



2.3 >Button 'Install' is setup the PowerManagerII



following the install wizard



**InstallShield Wizard**

**Customer Information**  
Please enter your information.

Please enter your name, the name of the company for whom you work and the product serial number.

User Name:  
xp\_ydako

Company Name:  
richcomm

Serial Number:

InstallShield

< Back   Next >   Cancel

on the serial number input box please enter the serial number which is on the cd packet and following the install wizard continue to next, make sure the setup dir and continue to enter the language which you will to install, After installation,

Powermanager II files will be copied into the directory you appointed.

**InstallShield Wizard**

**Customer Information**  
Please enter your information.

Please enter your name, the name of the company for whom you work and the product serial number.

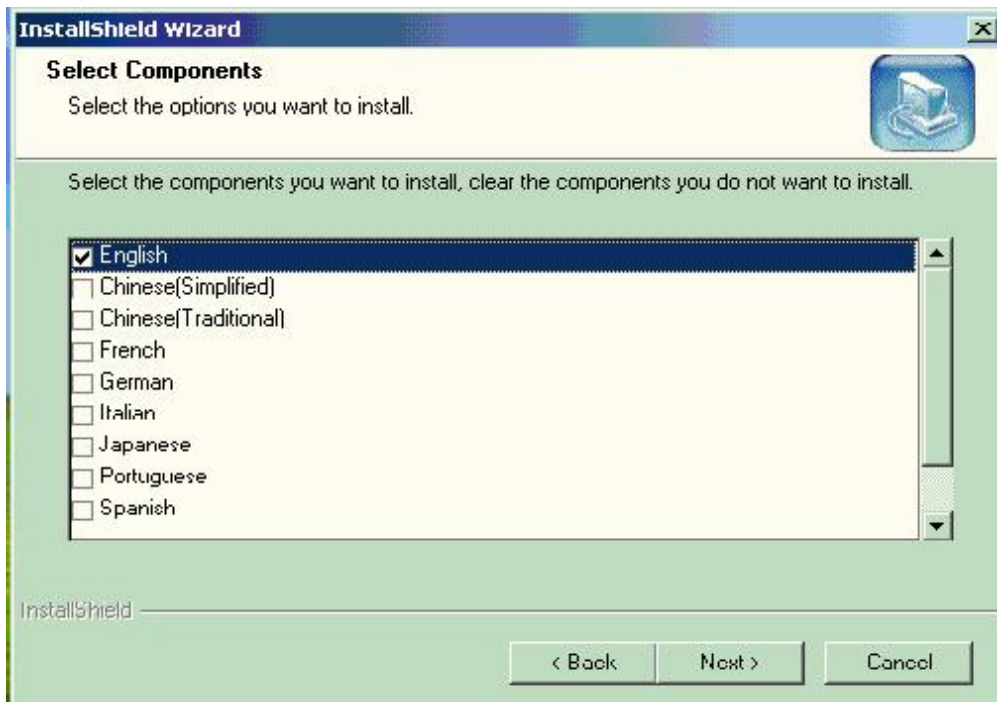
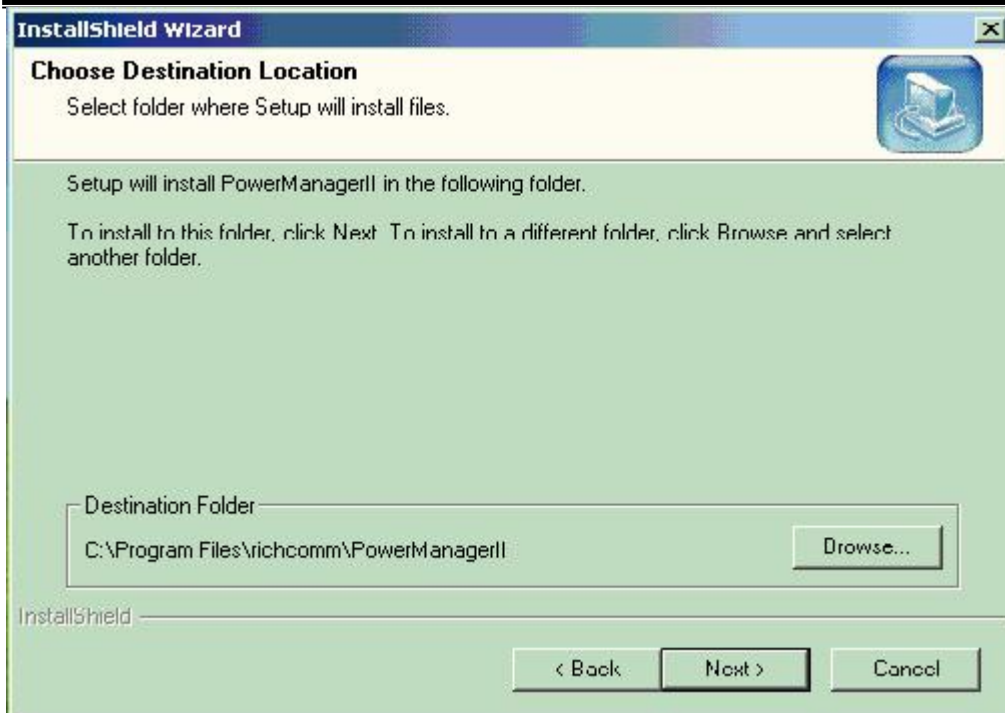
User Name:  
xp\_ydako

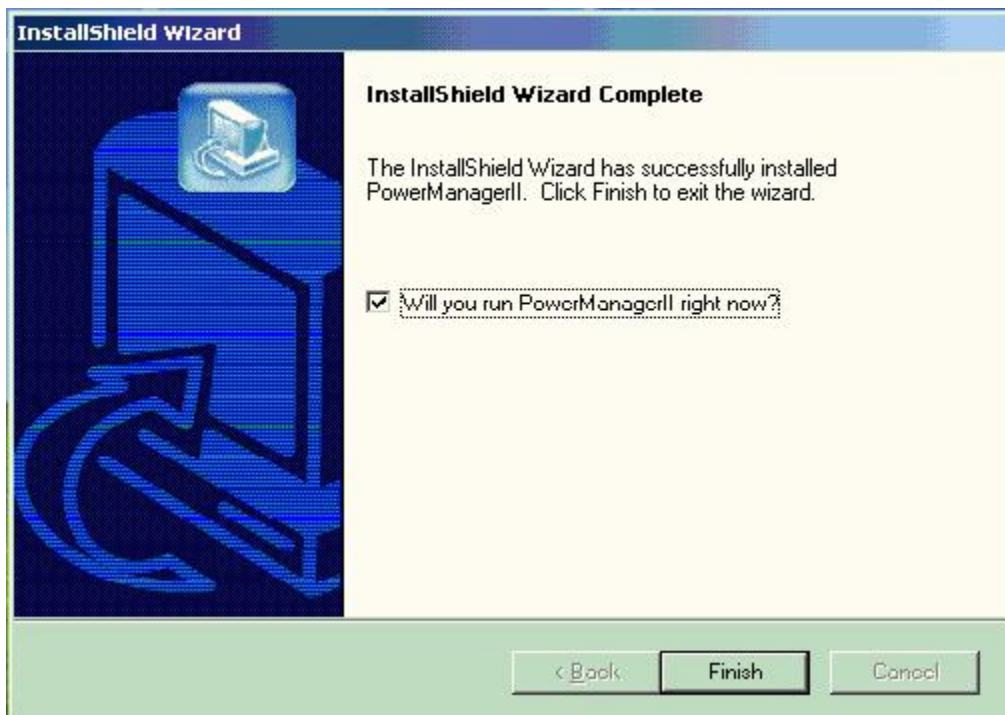
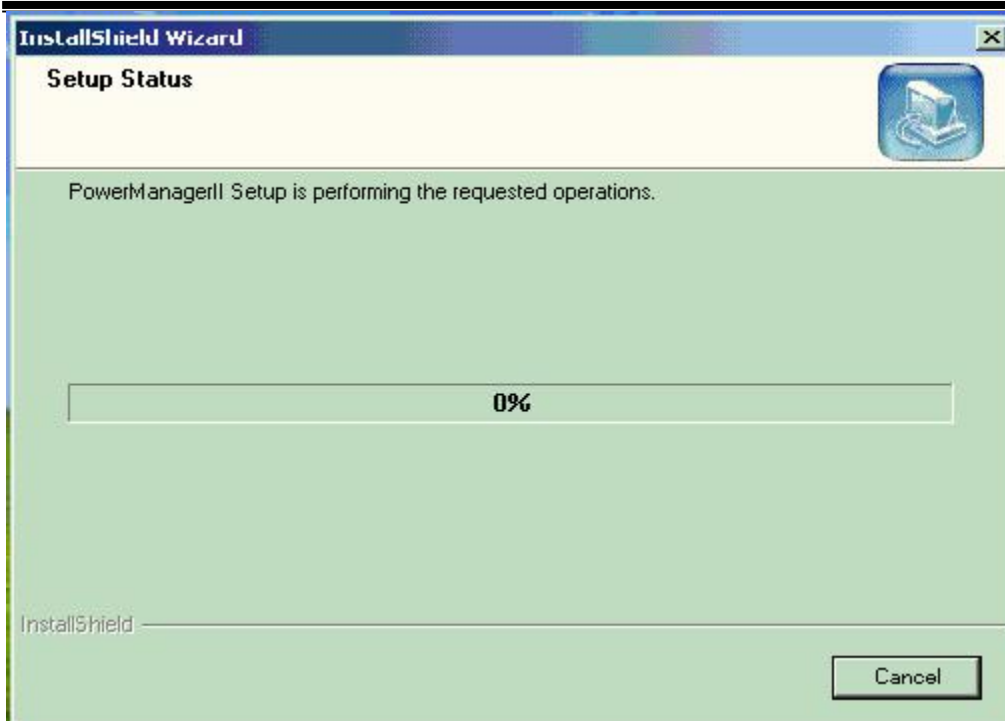
Company Name:  
richcomm

Serial Number:  
PM-0ed90-054a0-0dca0-076e0

InstallShield

< Back   Next >   Cancel





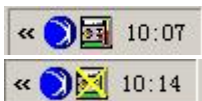
2.4 >Button 'About' is PowerManagerII development 'Welcome'



## Start-up and Quit Powermanager II

### Start-up Powermanager II

After installation, please restart the computer. For Windows98, check if there is a '**PowerManagerII**' icon in task bar. For Windows NT, go to 'control panel->service' and check if 'PowerManagerII' service has started. If you want to change the function configuration, please run the Powermanager II in the task bar directly or select " Powermanager II for Windows" from " Powermanager II " in program group of start menu in Windows.



Powermanager II in gear

Powermanager II un-start up or not on line

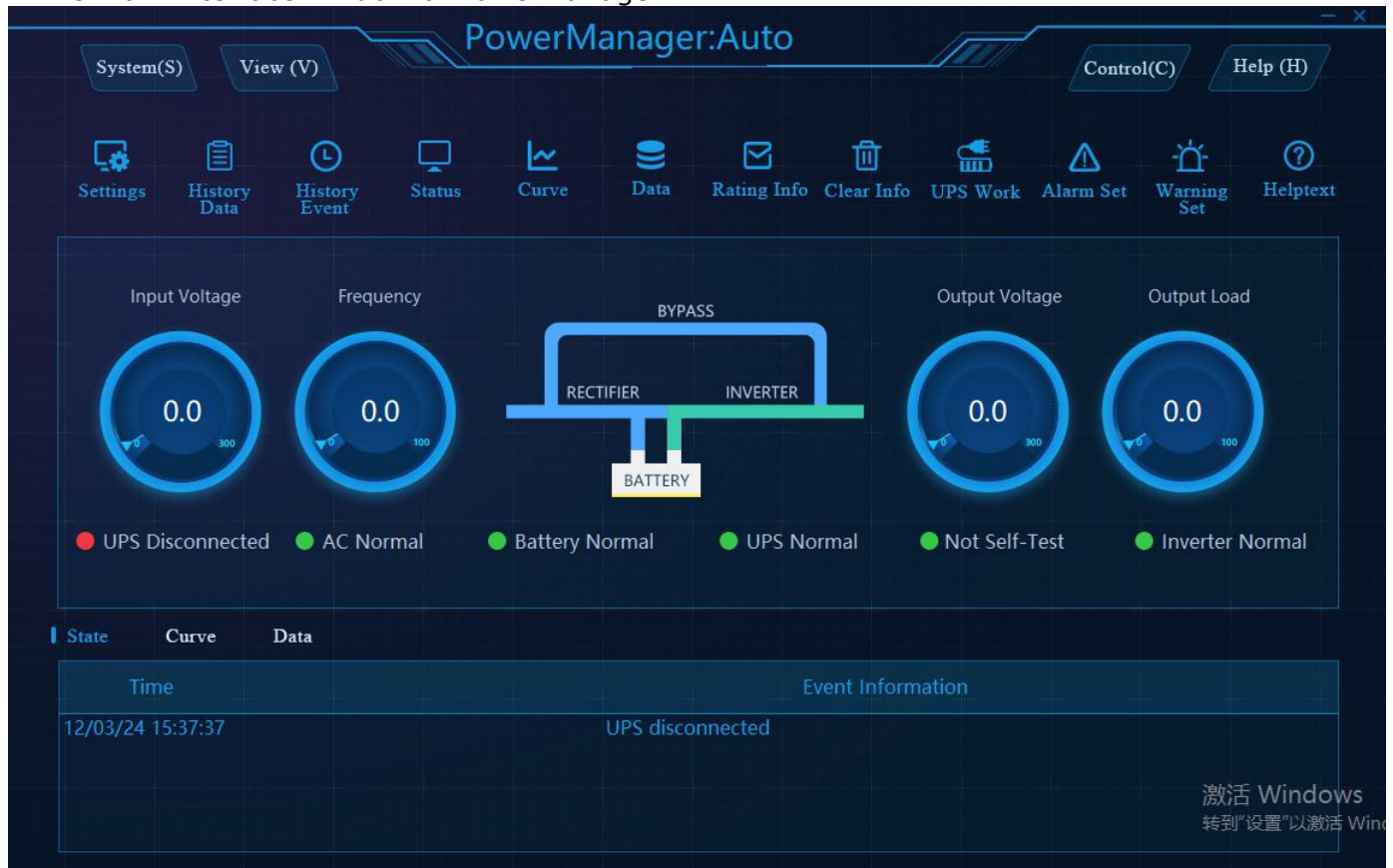
### Quit Powermanager II

After installation, there is 4 selection as below under" Powermanager II " in Windows start menu. If you want to remove the Powermanager II from the system, please select " Quit ".

Start Monitor(W)..	Ctrl+W
Help(H)..	Ctrl+H
About(A)..	Ctrl+A
Quit(Q)..	Ctrl+Q

## Description

The main interface window of PowerManager II



- (1) menu bar
- (2) UPS status chart
- (3) UPS warn parameter display area

---

## System Settings

### A. Basic Setting

After clicking on system setting, enter the following interface :

### System Setting

Base setting

Shutdown setting

Crisis process

History data setting of saving

☒ Local UPS

AUTO

☐ Authorization:

\*\*\*\*\*

Your UPS cannot be monitored remotely using a computer with serial port to connect. To do so, use the USB port instead.

☐ Remote UPS

IP Address:

172.16.0.130

Authorization:

richcomm

☐ Auto start PowerManager UI,when login system

This is to configure the mode of monitoring UPS

1:Default activate “Local UPS”, and can choose “AUTO”, “COM”, “USB”



## System Setting

Base setting
Shutdown setting
Crisis process
History data  
setting of saving

☒ Local UPS

☐ Authorization:

AUTO  
 AUTO  
 USB  
 COM1

▶

Your UPS cannot be monitored remotely using a computer with serial port to connect. To do so, use the USB port instead.

☐ Remote UPS

IP Address:

Authorization:

172.16.0.130

richcomm

🔍

☐ Auto start PowerManager UI,when login system

✓

✕

a: Choose “AUTO”, it will automatically search for communication mode with UPS

- b: Choose “USB”, it will only search for communication mode between USB and UPS  
 after choosing USB port, network monitor authorization can be activated  
 Network monitoring function: one UPS can be monitored by multi computer and protect multi computers against crisis  
 Network Monitoring condition: computers need monitoring must be installed by our software and choose  
 long-distance UPS in basic setting  
 The PowerManager II under monitoring must be USB communicated

## System Setting

Base setting

Shutdown setting

Crisis process

History data  
setting of saving

☒ Local UPS

USB

☒ Authorization:

\*\*\*\*\*

Your UPS cannot be monitored remotely using a computer with serial port to connect. To do so, use the USB port instead.

☐ Remote UPS

IP Address:

172.16.0.130

Authorization:

richcomm

☐ Auto start PowerManager UI,when login system

c: Choose “COM”, it will only search for communication mode between COM and UPS  
need to choose correct COM, or it will not be communicated



## System Setting

Base setting
Shutdown setting
Crisis process
History data  
setting of saving

☒ Local UPS

COM1

\*\*\*\*\*

▶

Your UPS cannot be monitored remotely using a computer with serial port to connect. To do so, use the USB port instead.

☒ Remote UPS

IP Address:

172.16.0.130

🔍

Authorization:

richcomm

☐ Auto start PowerManager UI,when login system

✓

✕

2: “testing”, after choosing interface, click on “testing” we can test the communication mode to see if communication is normal.

3: “long-distance UPS”, it’s non-LAN UPS being activated and input IP address for the computer that has PowerManager II installed and is under monitoring. or click “search”, all IP addresses for computers that have PowerManager II installed can be listed up so you can choose

17

one in need of being monitored;After “authorization”, the text must be same as the one authorized by monitored PowerManager II network, or could be failed to monitor

## System Setting

Base setting

Shutdown setting

Crisis process

History data setting of saving

☒ Local UPS

COM1

☐ Authorization:

\*\*\*\*\*

Your UPS cannot be monitored remotely using a computer with serial port to connect. To do so, use the USB port instead.

☒ Remote UPS

IP Address:

172.16.0.130

Authorization:

richcomm

☐ Auto start PowerManager UI,when login system

4: After “Start PowerManager II when log in WINDOWS” being activated, the monitoring interface can be automatically opened after computer started and remind you to start this software’s services at the same time;

## System Setting

Base setting

Shutdown setting

Crisis process

History data setting of saving

☒ Local UPS

COM7

▶

■ Authorization:

\*\*\*\*\*

Your UPS cannot be monitored remotely using a computer with serial port to connect. To do so, use the USB port instead.

☐ Remote UPS

IP Address:

172.16.0.130

🔍

Authorization:

richcomm

☒ Auto start PowerManager UI,when login system

✓

✕

### B. Shutdown settings

Choose **shutdown setting** and enter interface as below:

## System Setting

Base setting	Shutdown setting	Crisis process	History data setting of saving
--------------	------------------	----------------	-----------------------------------

☒ Auto-save files

☒ Shutdown UPS

Turn off UPS after  Minutes

☐ Display saved files when operating system start

Optional command file to execute, before operating system shutdown

✓

✕

**1, self-saving function ( activate it as advice)**

1) when set this function valid, software will save some files under operating when system is shut down

2) when set this function invalid, software will not save files under operating when system is shut down

**2 shut down UPS at the same time and shut down UPS in X minutes**

( please set shutdown time according to UPS's power supply time and computer shutdown time)

1) when set it valid, UPS will shut down in X minutes when system is closed

2) when set it invalid, UPS will not shut down when system is closed

### 3 showing file-saving when starting

1) when set it valid, there will be a window popped up and tell where the saved files are and the last program closed upon starting the software

2) When set it invalid, there will not be a window popped up telling where the saved files are upon starting the software.

**4 External program execution before shut down: after choosing, software will carry out program set by user before the system is shut down**

## C. Crisis process

1) Choose to close computer

The screenshot shows a 'System Setting' window with a dark blue background. The title bar is at the top. Below the title bar are four tabs: 'Base setting', 'Shutdown setting', 'Crisis process' (which is selected), and 'History data setting of saving'. The 'Crisis process' tab contains a list of settings. The first two are radio buttons: 'Shutdown System' (selected) and 'Sleep mode (requires Windows 2000 or above)'. Below these are eight checked checkboxes, each followed by a text description and a time setting. The time settings are in a box with a number and the word 'Minute' to its right. At the bottom of the window are two buttons: a checkmark button and an 'X' button.

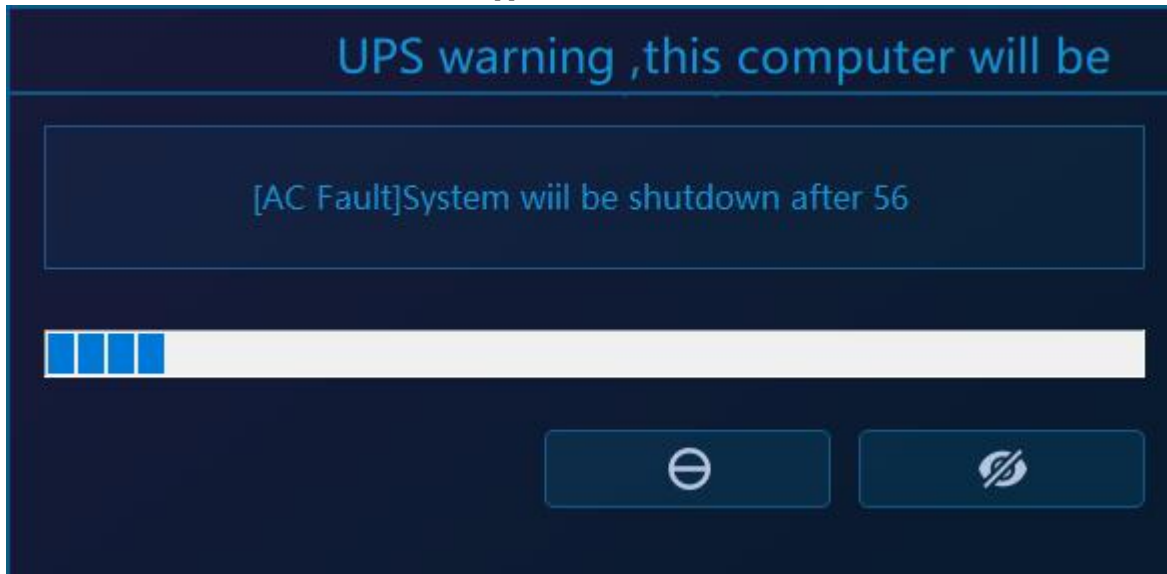
Setting	Value	Unit
<input checked="" type="checkbox"/> In case of AC fault, keep UPS on for	1	Minute
<input checked="" type="checkbox"/> When UPS Voltage low, leave system turned on for	2	Minute
<input checked="" type="checkbox"/> When UPS Bypassed, leave system on for	2	Minute
<input checked="" type="checkbox"/> When UPS Overheated (>65), leave system on for	2	Minute
<input checked="" type="checkbox"/> When UPS Overloaded (>100), leave system on for	2	Minute
<input checked="" type="checkbox"/> When UPS Fault, leave system turned on for	2	Minute
<input checked="" type="checkbox"/> When UPS Disconnected, leave system turned on for	2	Minute
<input checked="" type="checkbox"/> When UPS Shutdown, leave system turned on for	2	Minute

Please activate the parameters if need to close and protect computer when alarming; if not, please don't activate;

When city power is cut, battery voltage is low, UPS bypass, UPS is overheated, UPS is overloaded,

UPS is malfunctioned, UPS is disconnected, UPS is turned off etc, this software will count down before turned off.

Now we take UPS was disconnected and execute in 2 minutes as example, i.e. the countdown frame will appear when UPS is disconnected



After 2 minutes countdown, will close all ongoing programs and computer

If click “refrain from turning off the PC automatically” , it will not protect the computer

If click “hide” , the countdown frame will not appear and computer will turn off automatically in 2 minutes



2) Choose sleep, please note “sleep” function can only be activated by Win2000 and UP system and

PC machine supports this function as well.

When city power is cut, battery voltage is low, UPS bypass, UPS is overheated, UPS is overloaded,

UPS is malfunctioned, UPS is disconnected, UPS is turned off etc, it will count down the sleep time.

Now we take UPS was disconnected and execute in 2 minutes as example, i.e. the countdown frame will appear when UPS is disconnected

## System Setting

Base setting

Shutdown setting

Crisis process

History data setting of saving

☐ Shutdown System

☒ Sleep mode (requires Windows 2000 or above)

☒ In case of AC fault, keep UPS on for

☒ When UPS Voltage low, leave system turned on for

☒ When UPS Bypassed, leave system on for

☒ When UPS Overheated (>65), leave system on for

☒ When UPS Overloaded (>100), leave system on for

☒ When UPS Fault, leave system turned on for

☒ When UPS Disconnected, leave system turned on for

☒ When UPS Shutdown, leave system turned on for

1

Minute

2

Minute

2

Minute

2

Minute

2

Minute

2

Minute

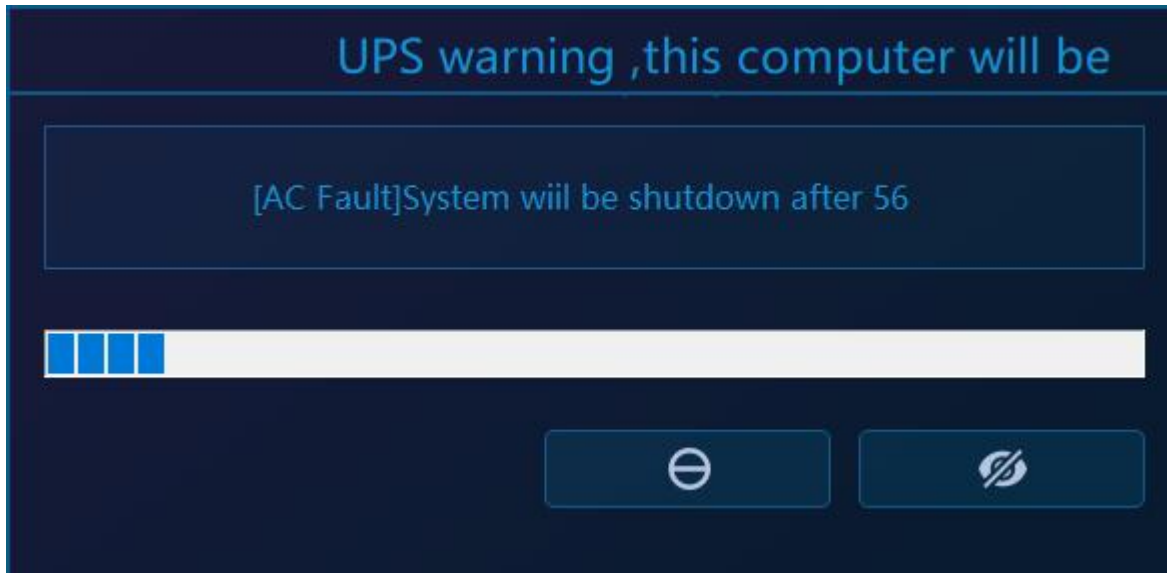
2

Minute

✓

✗

Computer entered SLEEP status after 2-minute countdown



If click “Refrain from turning off the PC automatically”,  
the countdown frame will disappear and the computer will not transfer to  
SLEEP status.

If click “hide”, the countdown frame will disappear and enter “SLEEP”  
status in 2 minutes



## History data saving setting

### System Setting

Base setting


Shutdown setting


Crisis process

History data setting of saving

☒ Save UPS history data

Interval:  Seconds





When set “whether save history data” as valid, software will save UPS history data at user’s predefined interval (can set the interval as one hour or longer if no special need)

When set “whether save history data” as invalid, software will not save UPS history data

### Broadcast alarm

Please start network message alarming as below before using network broadcast alarming

## Warning

Broadcast	SMS	Email address	Sound	Pop-up windows
-----------	-----	---------------	-------	----------------

☒ Enable NT messenger notifications

Number of messages sent

✓

✕

## Email

Please start Email alarm function before using Email alarming

Please set correct SMTP address, Email address, users and password etc. How to send alarming message by Email to target?

Refer to map as below:

### Warning

Broadcast	SMS	Email address	Sound	Pop-up windows
-----------	-----	---------------	-------	----------------

☒ Enable Email notifications

SMTP Server:

Recipient Email

☒ SMTP Authentication

Username:

Password:

For example: if the sender' s Email is [test@163.com](mailto:test@163.com), please input as below:

# Warning

Broadcast	SMS	Email address	Sound	Pop-up windows
-----------	-----	---------------	-------	----------------

☒ Enable Email notifications

SMTP Server:

smtp.163.com

Recipient Email

test@163.com

☒ SMTP Authentication

Username:

test

Password:

\*\*\*\*\*

✓

✕

Choose alarm receiver as below:

[illegible]

Click “add” as below:

## Add

Warn Mode:

Email Warni ▾

User:

incept

Email Address:

incept@yahoo

✓

✕

Choose alarm mode by Email alarming and complete others according to prompts  
Click “add” as below

[illegible]

**Now, Email alarming is well added**

## SMS

Please start SMS alarming function before using

### Warning

Broadcast	SMS	Email address	Sound	Pop-up windows
-----------	-----	---------------	-------	----------------

☒ Enable SMS notifications

☒ Send SMS using GSM Modem

GSM Modem

COM1

Baud Rate:

9600

☐ Default

SMS Center:

+86138002000

✓

✕

Set GSM Modem serial port and set baud rate according to Modem parameters and set correct message center.

For example: the message center is +8613800200500

## Sound

Please start sound alarm before using

### Warning

Broadcast

SMS

Email address

Sound

Pop-up windows

☒ Enable sound warnings

Play Times:

Sound files:

Warning Infomation	Source File
Battery failure	batlowfaile.wav
Battery Normal	batlowsucce.wav
AC Input Fault	utilfail.wav
AC Normal	utilsucce.wav
Remote UPS is turned off now	closeups.wav
Remote UPS Shutdown cancelled	nocloseups.wav
UPS Bypass	bypass.wav
Inverter Normal	nobypass.wav
UPS Overheated	tempfaile.wav
Temperature Normal	tempsucce.wav
Overloaded	overload.wav
Load Normal	nooverload.wav
UPS Failure	unfailed wav

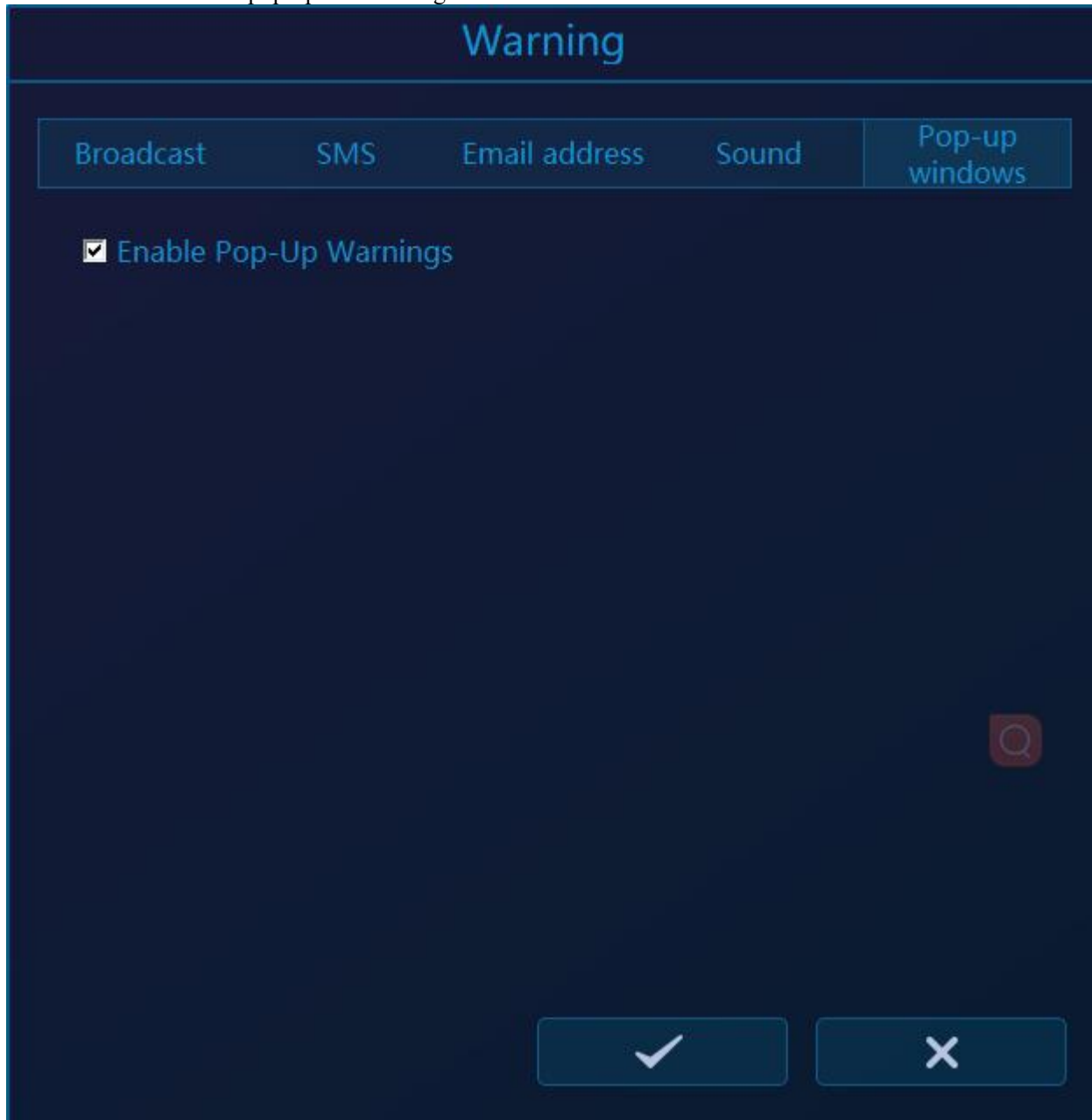
According to sound frequency set by user, software will send corresponding alarm frequency when UPS status changed.

For example: when battery voltage is low, software will tell by speaker or other acoustics equipments connected with computer that “ please note, UPS battery voltage is low now”



## Window

Please start window alarm pop-up before using



When alarming, there will be dialogue box popped up as below  
Closing this dialogue box, it will appears again when next alarm; minimizing it, it will not pop up when next alarm and you need to maximize it before reading it  
Need to delete alarm message, please click “clear” and all alarm messages will be cleared up

## Pop-Up window

[illegible]

## Check History Event

Click history event record and enter

### UPS Events

Event All Events Date: from 2024/11/ 4 -- 2024/12/ 4


Time	Classification	Name	IP address
2024/12/4 10:29:43	Critical Event	UPS disconnected	COM11
2024/12/4 10:29:21	General Event	UPS test over	COM11
2024/12/4 10:29:10	General Event	UPS test	COM11
2024/12/4 10:29:02	General Event	UPS connected	COM11
2024/12/4 10:29:02	Warning Event	UPS error	COM11
2024/12/4 10:28:56	Critical Event	UPS disconnected	COM11
2024/12/4 10:28:49	General Event	UPS connected	COM11
2024/12/4 10:20:55	Critical Event	UPS disconnected	COM11
2024/12/4 10:20:37	Critical Event	AC Fault	COM11
2024/12/4 10:20:12	General Event	UPS connected	COM11
2024/12/4 10:07:41	Critical Event	UPS disconnected	COM11
2024/12/4 10:07:32	General Event	UPS connected	COM11
2024/12/4 10:07:11	Critical Event	UPS disconnected	COM11
2024/12/4 10:06:29	General Event	UPS connected	COM11
2024/12/4 9:43:57	Critical Event	UPS disconnected	COM7
2024/12/4 9:43:42	General Event	UPS connected	COM7



In this list, there are UPS event' s rating, time, title and its monitoring PC address recorded

- 1) Providing filter mode by event' s rating
- 2) Providing filter mode by time
- 3)Also providing filter mechanism for deleting history event

## Delete Record



Please select the data deletion mode, then click on "execute" button to delete the records.

☒ Delete records from

2024/11/ 3

to


2024/12/ 3


☐ Delete records before

1

Days

☐ Delete All Records





Choose different deleting mode. Like

- 1) deleting dated from 2007-7-1 to 2007-7-31;
- 2) deleting all dated one day ago;
- 3) deleting all records

## Check History Data

Click “history data record” and enter:

[illegible]

All that listed are UPS history data and the time interval is defined by users themselves.

Now there are input voltage, Frequency, Output voltage and output load etc


IP address: if the UPS is LAN connected, it shows your chosen communication interface like USB, COM1

If the UPS is long-distant, it shows long-distance monitoring IP address like 192.168.0.2


1) Filtering record function

## Filter

### Select Filter


☐ Enable Filter

### Filter Events



Parameter ID	Parameter Name
<input type="checkbox"/> 1	IP Address
<input type="checkbox"/> 2	Input Voltage
<input type="checkbox"/> 3	Frequency
<input type="checkbox"/> 4	Output Voltage
<input type="checkbox"/> 5	Output Load
<input type="checkbox"/> 6	Battery Capacity
<input type="checkbox"/> 7	Temperature


### Event time


 Record

2024/11/ 3

--


2024/12/ 3





Providing filtering mode by UPS relative parameters and mode by time

## Delete Record



Please select the data deletion mode, then click on "execute" button to delete the

☒ Delete records from

2024/11/ 3

to


2024/12/ 3


☐ Delete records before

1

Days

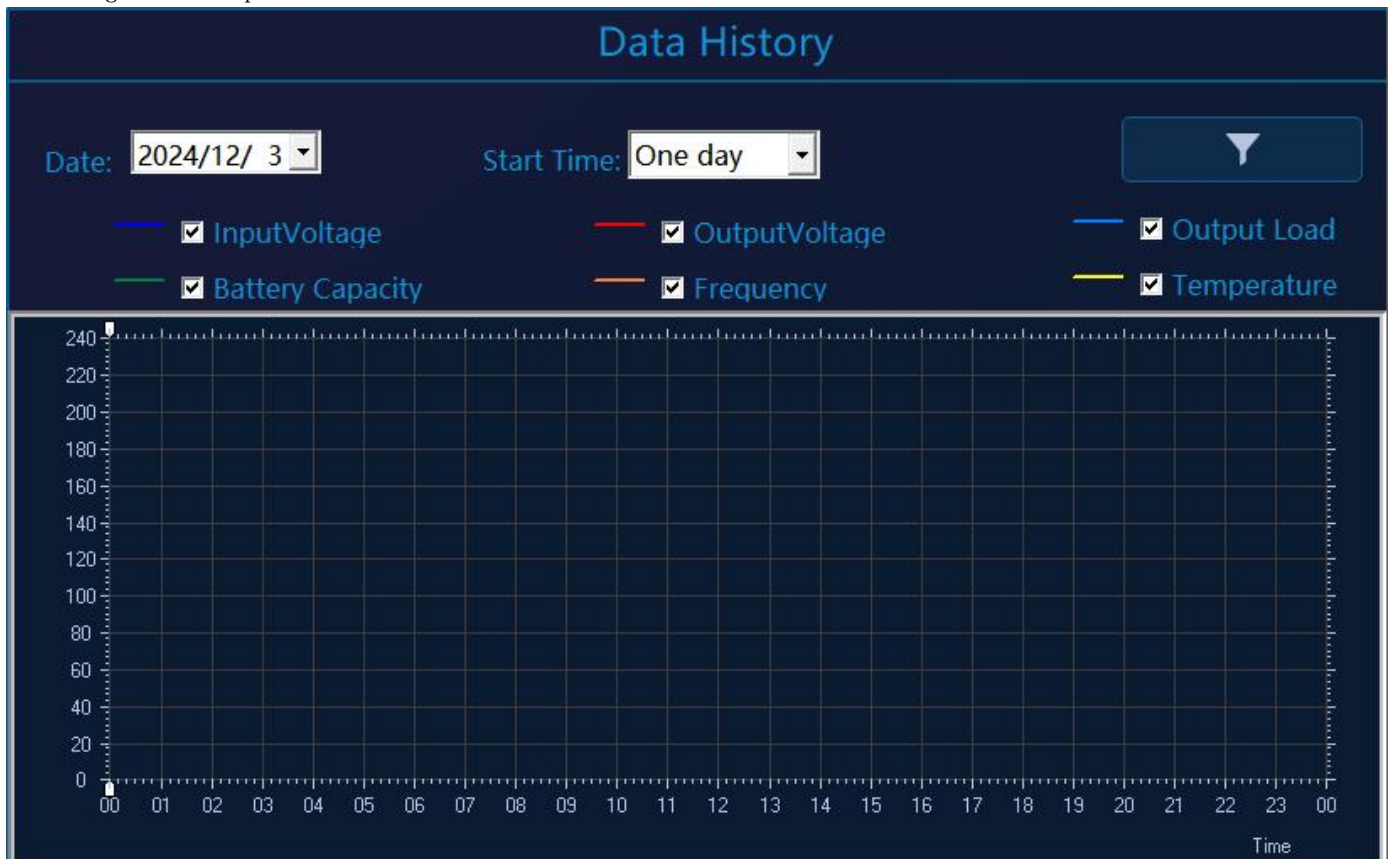
☐ Delete All Records





Providing 1, deleting by period; 2, deleting certain day' s record; 3, deleting all three modes

Checking curve map



Checking UPS status by curve map, filtering by parameters and choose time and period, reflecting

UPS status by form of curve

### Check curve map

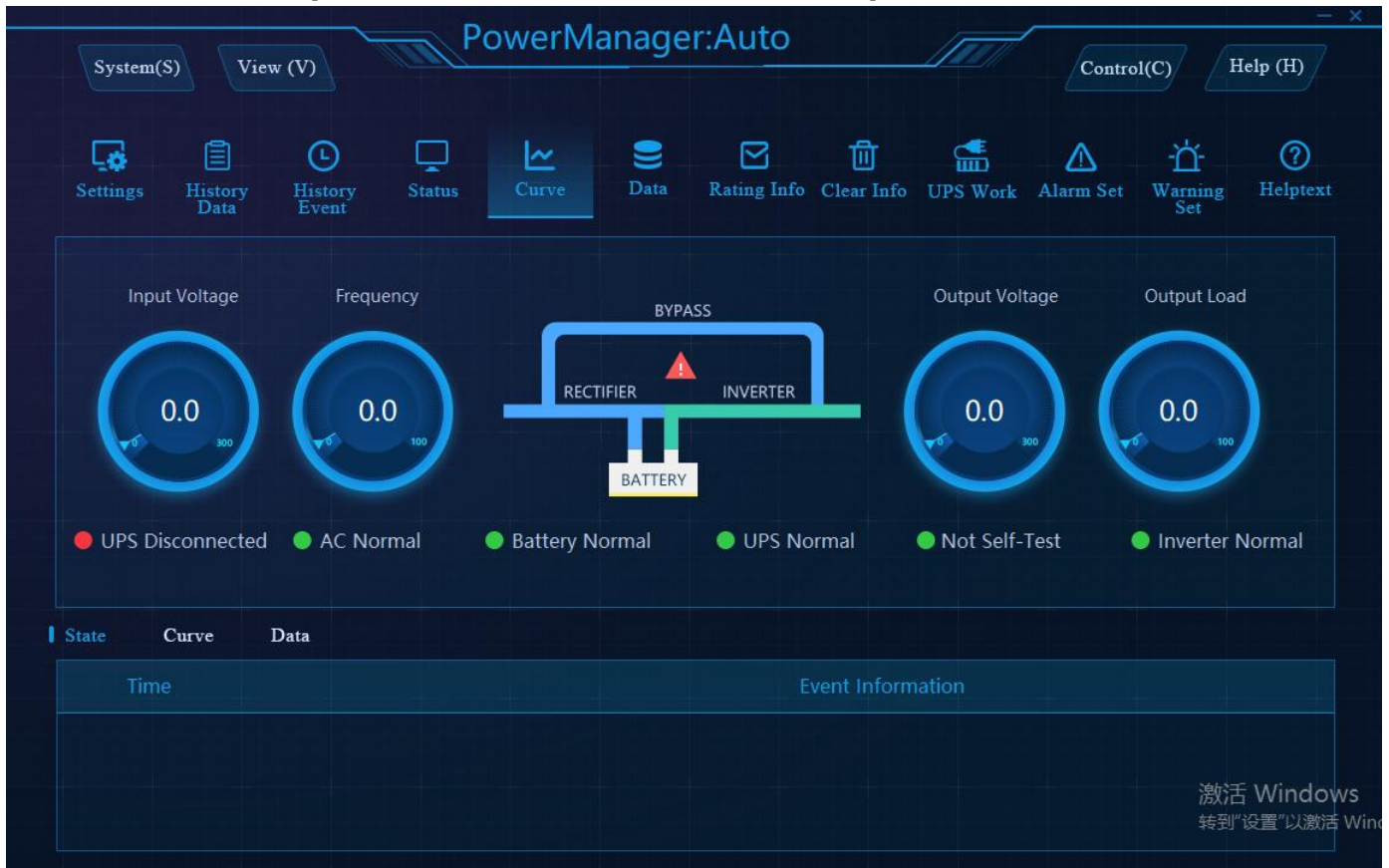
Click “check curve map” as below

In the curve map, we can clearly read different colors representing input voltage, output voltage, battery capacity and loads change in a period



## Check State Map

Click check state map as below ( this is UPS normal state map)



By this state map, we can read data like input voltage, output voltage, frequency, battery capacity, temperature inside UPS and load etc,



It means the input voltage now is 220.00V;



it means the output voltage now is 220.00V;



it means the voltage frequency now is 50.00Hz

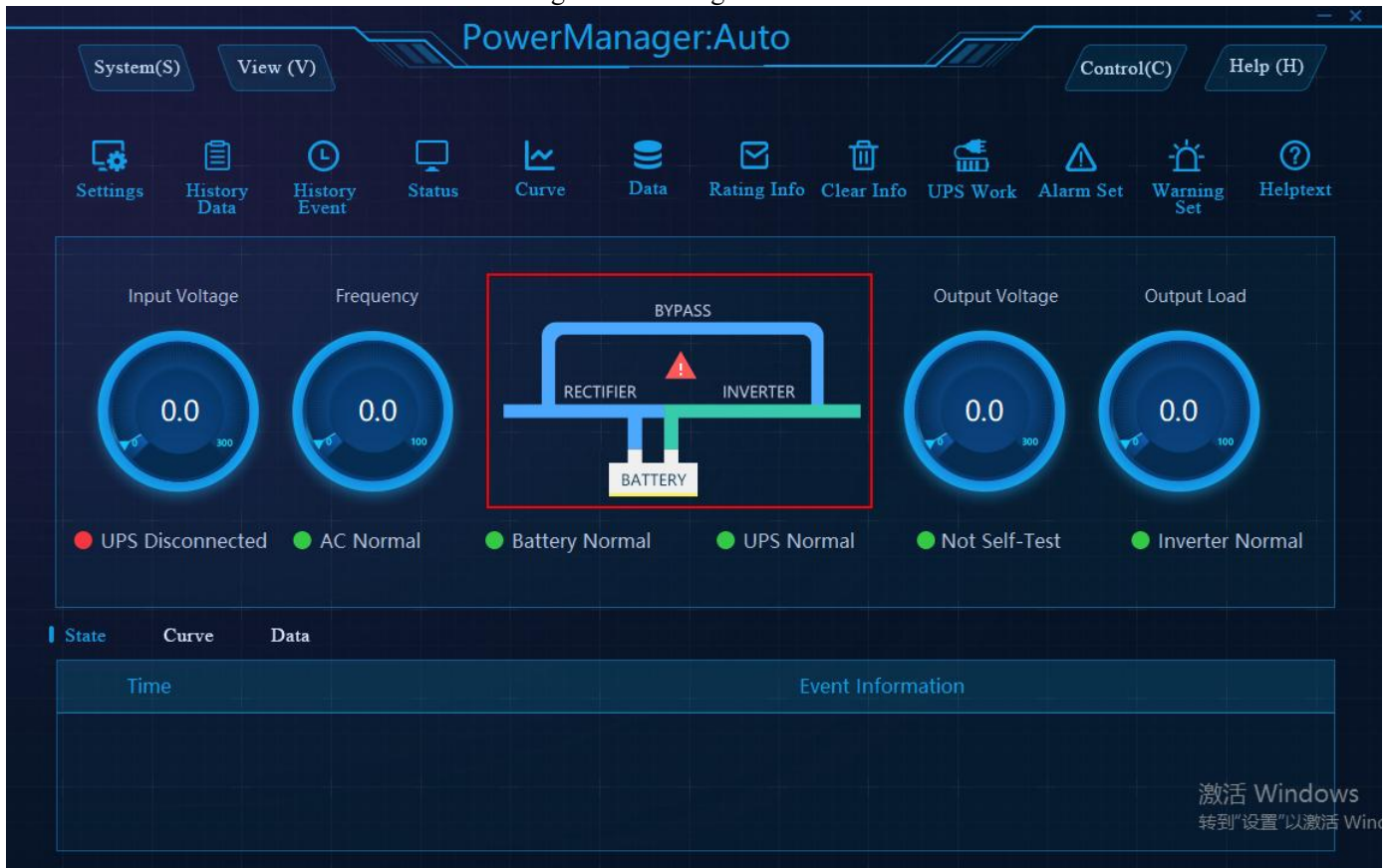


it means the output load now is 34%

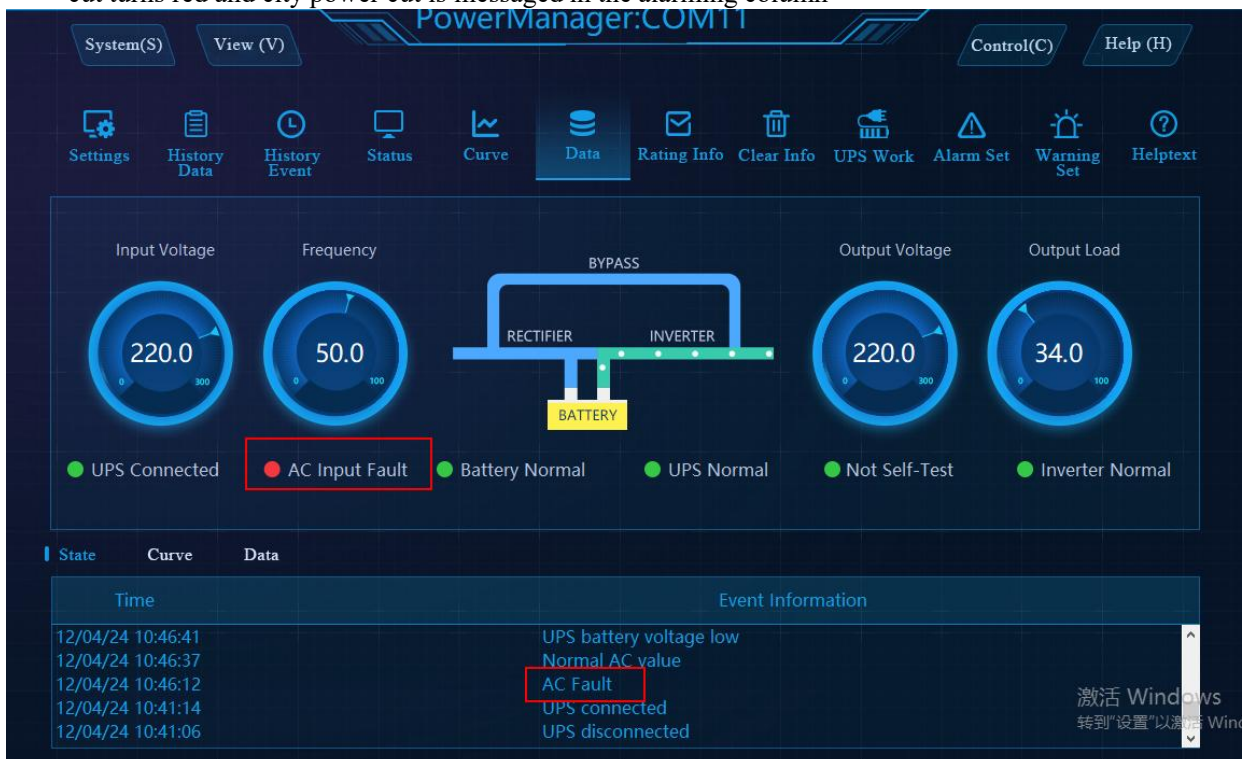
By this map, we can check alarming situation: UPS disconnected, city power cut, low battery voltage, UPS shutdown, UPS malfunction, testing and bypass etc

1: When UPS is disconnected as map below: the streaming line stopped, the indicator for UPS disconnected turns red and

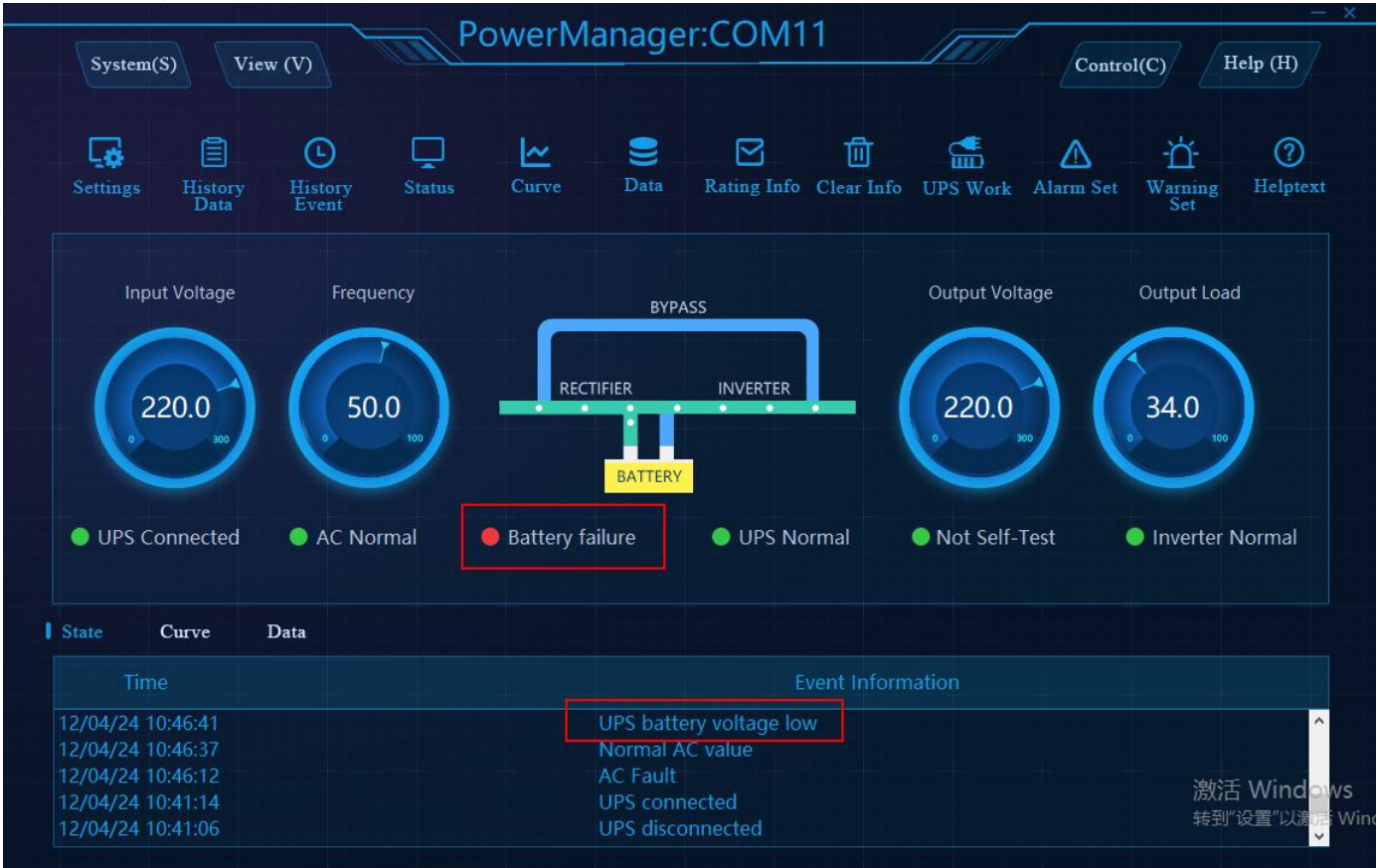
UPS communication disconnected is messaged in alarming column.



2: When city power is cut as map below: the streaming line is extended from battery, the indicator for city power cut turns red and city power cut is messaged in the alarming column

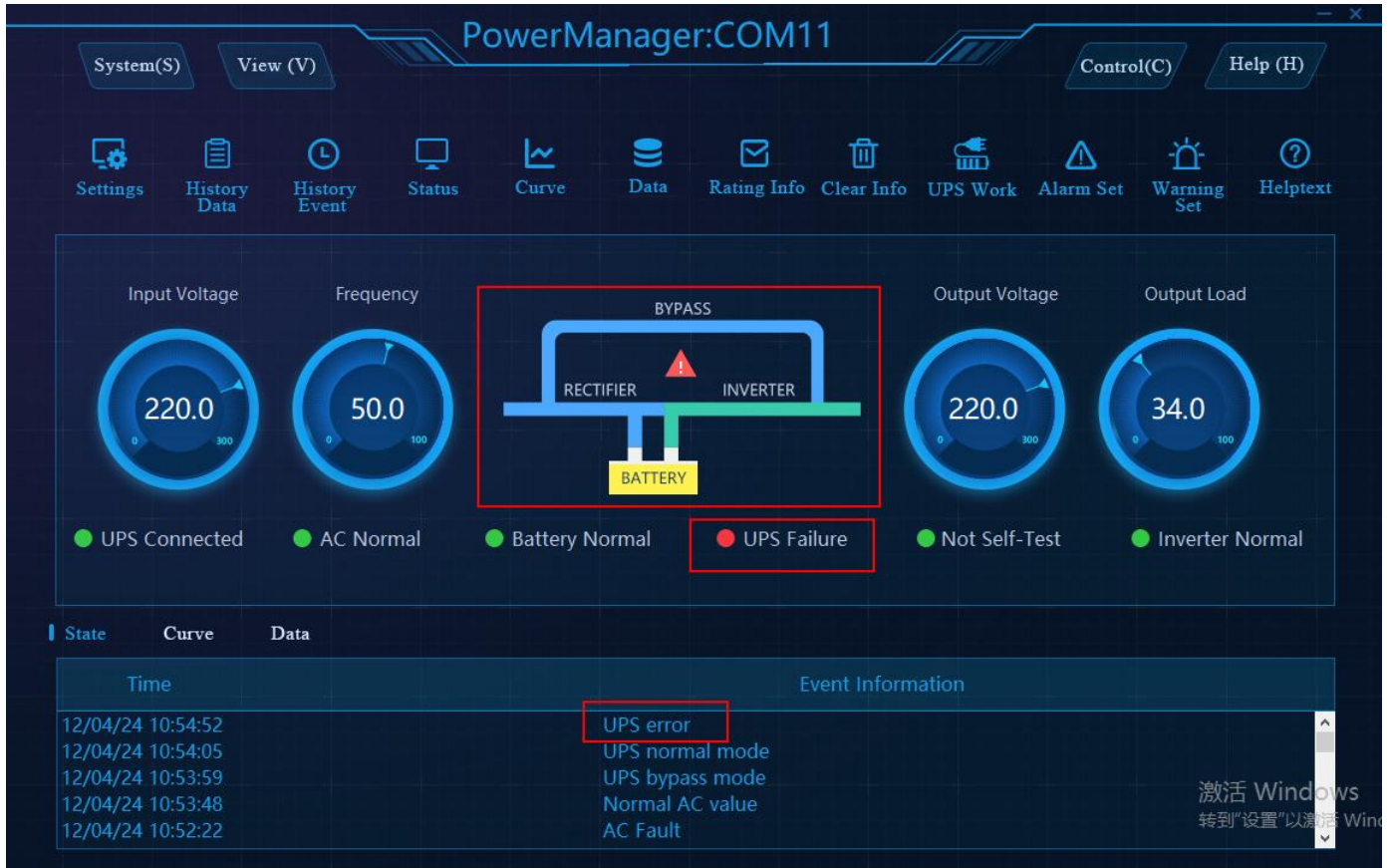


3: when battery voltage is low as map below: the indicator for low battery voltage turns red and abnormal battery voltage is messaged in the alarming column



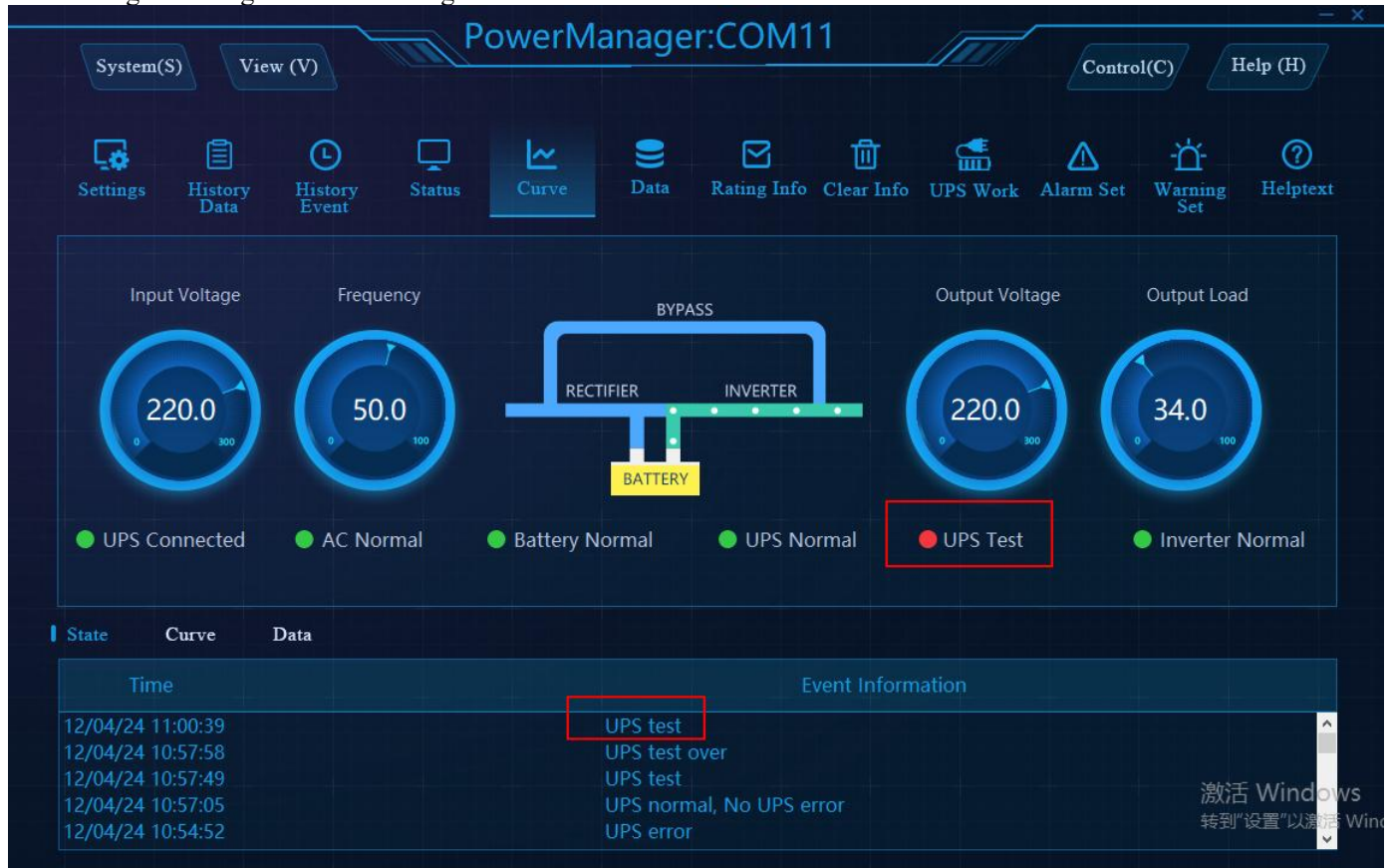


4: When UPS is malfunctioned as map below: the streaming line is fixedly and there is exclamatory mark in the middle,  
the indicator for UPS malfunction turns red and UPS malfunction is messaged in the alarming column

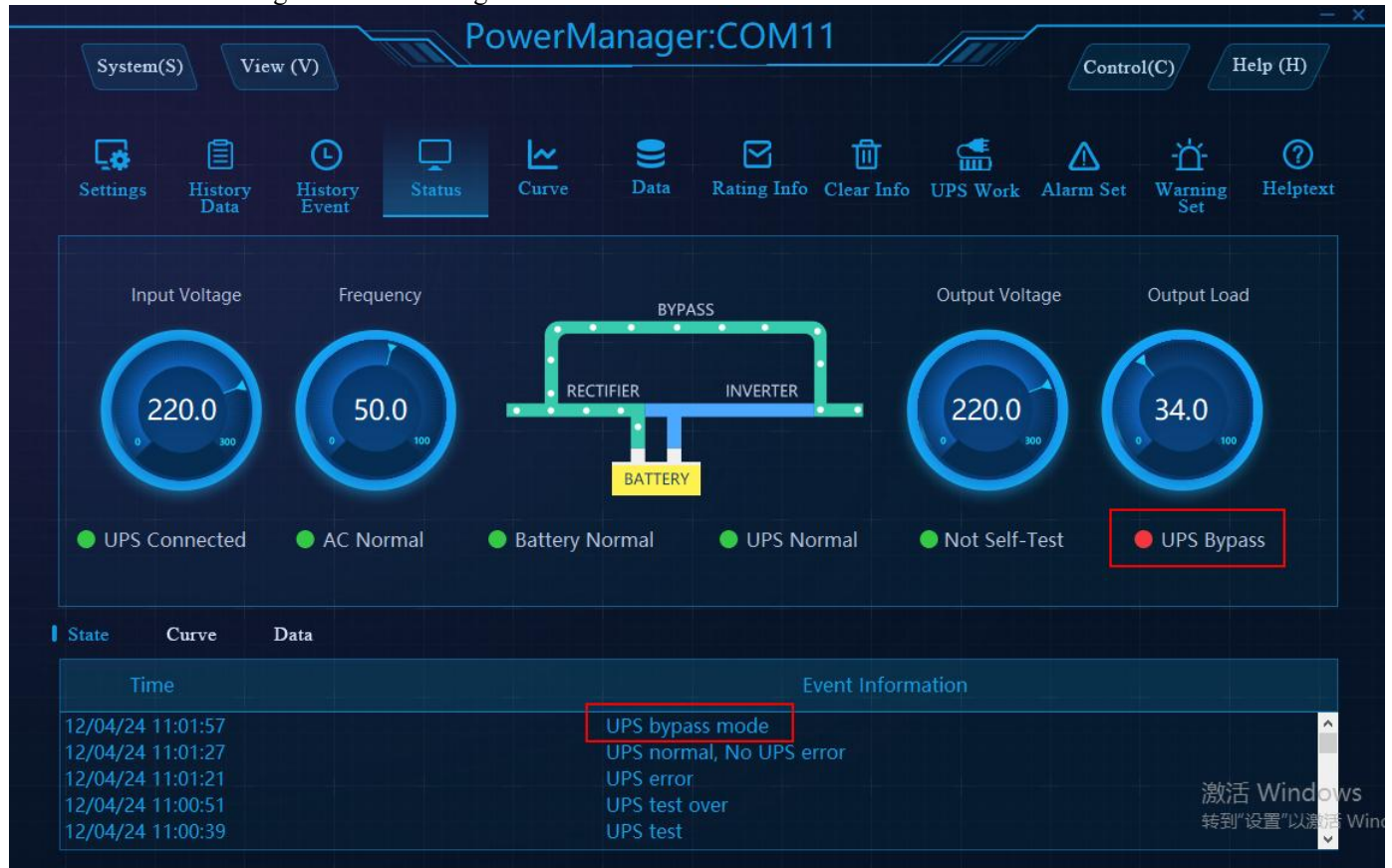


5: When testing as map below: the streaming line is extended from the battery, the indicator for testing turns red and

UPS testing is messaged in the alarming column



6: When bypass as map below: the streaming line passed by BYPASS, the indicator for BYPASS turns red and  
UPS BYPASS is messaged in the alarming column





## UPS Control

### Scheme Task

click “UPS Scheme Task” as below

### Scheme Task

UPS tasks Schedule:

Task name	Execute cycle	Run time	Start time

Task

☒ UPS Self-Test for 10 seconds

☐ Turn off UPS, in  Minutes

☐ UPS Self-Test Until Battery Low

☐ Turn off UPS, in  Minutes

☐ UPS Self-Test for  Minutes

☐ and reboot UPS, in

☒ Shunt Down Computer,Now?

Time of Task to Execute

Execute Cycle :

Start Time:

Date:

激活 Windows  
转到“设置”以激活

Planning by:

- 1) UPS self-diagnose 10 seconds
- 2) UPS stops self-diagnose until the battery voltage is low
- 3) UPS self-diagnose X minutes
- 4) shut down UPS in X minutes
- 5) Shut down UPS in X minutes and restart in Y minutes

Carrying out on regular basis as below:

- 1) once
- 2) EveryDay
- 3) EveryWeek
- 4) Everymonth
- 5) Every Day

User can click “add” according to planning and carrying out on regular basis, it will be well added as below:

Scheme Task

UPS tasks Schedule:

Task name	Execute cycle	Run time	Start time
UPS Self-Test for 10 seconds	Once	2017-6-20	14:47:34

Task

☒ UPS Self-Test for 10 seconds
 ☐ UPS Self-Test Until Battery Low
 ☐ UPS Self-Test for  Minutes

☐ Turn off UPS, in  Minutes
 ☐ Turn off UPS, in  Minutes
 ☐ Turn off UPS, in

☒ Shunt Down Computer, Now?

Time of Task to Execute

Execute Cycle :  Start Time:  Date:

+
✎
🗑
↺

After it' s added, software will carry it out automatically when set time

## Turn off and Turn on

Click “Turn off/Turn on” as below

☒ Turn off UPS, in  Minutes
 ☐ Turn on UPS, in  Minutes

☐ Turn off UPS, in  Minutes
 ☐ Turn on UPS, in  Minutes

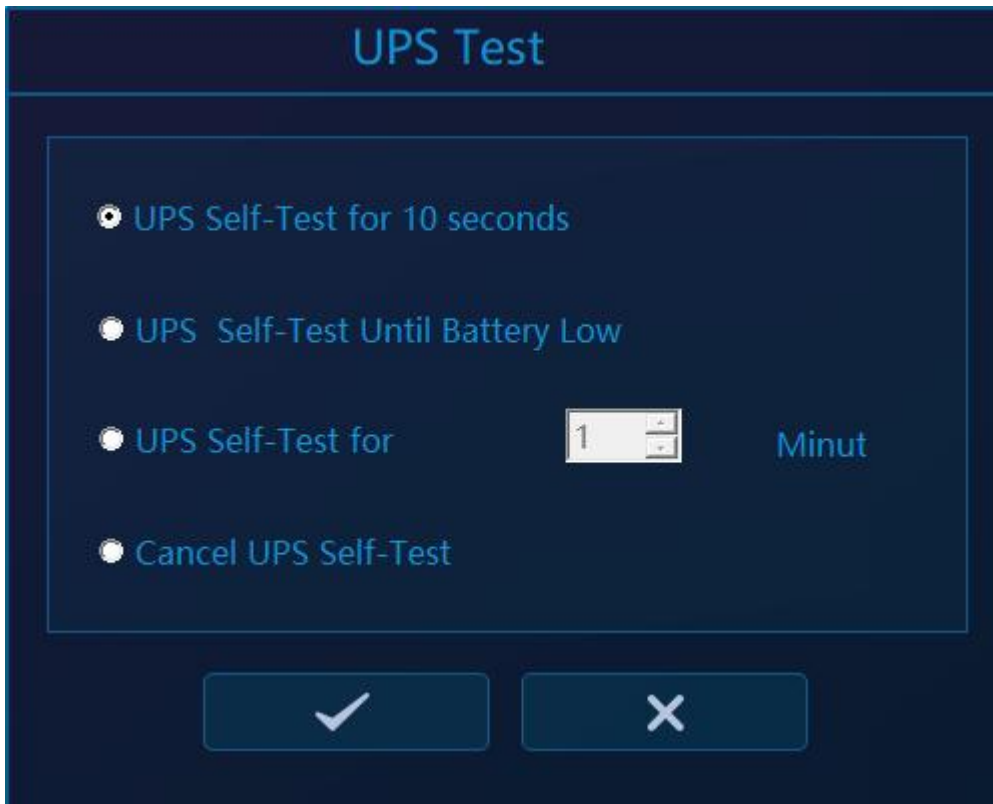
Provide 3 functions as follows

- 1) Shut down UPS in X minutes and click on “execute” UPS will automatically shut down in X minutes
- 2) Shut down UPS in X minutes and restart in Y minutes, click on “execute” , UPS will automatically shut down in X minutes and restart in Y minutes.
- 3) Cancel command of shut down UPS. When the command of shut down UPS was sent but UPS is still waiting for shutdown, we can cancel the command.

---

## Testing

Click “test” as below



UPS Test

☒ UPS Self-Test for 10 seconds

☐ UPS Self-Test Until Battery Low

☐ UPS Self-Test for  Minut

☐ Cancel UPS Self-Test

✓ X

Providing 4 functions:

1) UPS self-diagnose 10 seconds: click “execute”, testing is finished after UPS self-diagnose for 10 seconds

2) UPS self-diagnose till the battery voltage is low: click “execute”, testing is finished when UPS battery voltage is low

3) UPS self-diagnose X minutes: click “execute”, testing is finished in X minutes

4) Cancel UPS self-diagnosis: UPS cancels testing when execute cancel UPS self-diagnosis

---

## About PowerManager II

Click on the icon of PowerManager in the panel and further click on “about” in the pop-up menu then you can open “PowerManager” window

# PowerManager II for LINUX

## 1. Software installation and operation

### i) soft installation

copy the package ups\_manager to you favorite directory , example :/root/tmp

Use the tar command to extract files from the diskette or software package:

```
tar -xzvf ups_manager.tar.gz
```

Change the working directory to /tmp.

```
cd /root/tmp
```

Execute the installation program:

```
./install.linux.sh
```

The installation program will not execute in some shell scripts. If this happens, change to another shell script and try again.

the installation program will automatically copy files to the default location "/etc/RichComm/ups\_manager/" and modify the system startup file to contain the ups\_manager for UNIX daemon process.

### ii) start program

The installation program will automatically start the main program .

you can start it use following command:

```
./ups_manager start
```

### iii) stop program

you can start it use following command:

```
./ups_manager stop
```

### iv) config program

you can start it use following command:

```
./ups_manager config
```

---

## 2. software package

./ups\_monitor  
./ups\_status  
./ups\_config  
./shutdown.sh  
./ups\_manager  
./ups\_manager start  
./ups\_manager stop  
./ups\_manager config  
./ups\_manager status  
./ups\_manager restart  
./TimeCfg.conf  
./install.linux.sh  
./Readme  
./SendMSG.sh  
./startup.add

---

# PowerManager II for SCO UNIX

## 1. Software installation and operation

### i) soft installation

copy the package ups\_manager to you favorite directory , example :/root/tmp

Use the tar command to extract files from the diskette or software package:

```
tar -xvf ups_manager.tar
```

Change the working directory to /tmp.

```
cd /root/tmp
```

Execute the installation program:

```
./install.sco.sh
```

The installation program will not execute in some shell scripts. If this happens, change to another shell script and try again.

the installation program will automatically copy files to the default location "/etc/RichComm/ups\_manager/" and modify the system startup file to contain the ups\_manager for UNIX daemon process.

### ii) start program

The installation program will automatically start the main program .

you can start it use following command:

```
./ups_manager start
```

### iii) stop program

you can start it use following command:

```
./ups_manager stop
```

### iv) config program

you can start it use following command:

```
./ups_manager config
```

---

## **2. software package**

.  
/ups\_monitor  
./ups\_status  
./ups\_config  
./shutdown.sh  
./ups\_manager  
./ups\_manager start  
./ups\_manager stop  
./ups\_manager config  
./ups\_manager status  
./ups\_manager restart  
./TimeCfg.conf  
./install.sco.sh  
./Readme  
./SendMSG.s



---

# PowerManager II for FreeBSD

## 1. Software installation and operation

### i) soft installation

copy the package ups\_manager to you favorite directory ,  
example :/root/tmp Use the tar command to extract files from the  
diskette or software package:

```
tar -xzf upsmanager1.0v.bsd.tar
```

This demand will create a directory: upsmanagerinstall. Enter  
this directory, execute file: ./install.freebsd.sh . Converse the file  
installation. the installation program will automatically copy files to the  
default location "/etc/ups\_manager/" and modify the system startup  
file to contain the ups\_manager for freebsd daemon process.

### ii) start program

The installation program will automatically start the  
main program .

you can start it use following command:

```
./ups_manager start
```

### iii) stop program

you can start it use following command:

```
./ups_manager stop
```

### iv) config program

you can start it use following command:

```
./ups_manager config
```

---

## **2. software package**

./ups\_monitor  
./ups\_status  
./ups\_config  
./shutdown.sh  
./ups\_manager  
./ups\_manager start  
./ups\_manager stop  
./ups\_manager status  
./ups\_manager config  
./ups\_manager restart  
./TimeCfg.conf  
./install.freebsd.sh  
./Readme  
./SendMSG.sh  
./startup.add

## **3. contact us and technical support**

TEL: (86)20-82329896      (86)20-82329869

E-Mail: services@richcomm.com.cn

WebSite: <http://www.richcomm.com>